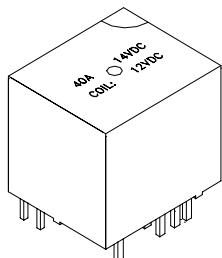


 <p>Industrial & Electrical Components</p>	<h1>Automotive Relay</h1>	<p>Part No. NRA06</p>
---	-------------------------------	------------------------------



P.C.B mounting pins
Stable function in high or low temp.
With or without cover
40A starting load capacity

CONTACT

Arrangement	1A / 1B / 1C
Contact Material	Silver Alloy
Contact Resistance	
(By voltage drop 6V 1A)	Max. 30mΩ
Rating	
Resistive load	1A: 40A 14VDC
(Cos.Φ=1)	1B: 30A 14VDC
	1C: 20A 120VAC, 15A 28VDC
Max. Allowable Voltage	75VDC 380VAC
Max. Allowable Current	40A
Max. Allowable Power	460W 2400VA
Service life	
Electrical	1 X 10 ⁵
Machanical	1 X 10 ⁷

CHARACTERISTICS

Operate Time	5ms
Release Time	4ms
Initial breakdown voltage	
Between coil & contact	750VAC for 1 Min.
Between open contacts	500VAC for 1 Min.
Insulation Resistance	Min.100MΩ (500 VDC)
Ambient temperature	-40 ~+105
Humidity	85%
Shock	Functional 200 m/s ² 11ms
Resistance	Destruction ----
Vibration	Functional 10 to 40 Hz D.A. of 1.3mm
Resistance	Destruction ----
Unit weight	21g Max.

ORDERING INFORMATION

e.g

NRA06 - A - 12D - E - S - L

NCR Automotive Relay Part No.

Contact Form: C=1C/O; A = N/O; B= N/C

Coil Voltage: 3, 5, 6, 9, 12, 24 dc

E= European type pin size U= USA type pin size

S= SEALED K=OPEN (without cover)

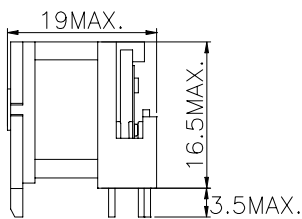
Nil = 1.6W L=1.9W

COIL DATA (at 20)

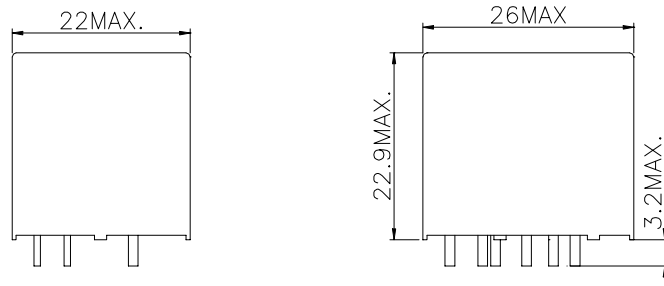
Nominal Voltage (VDC)	Pick-up Voltage VDC(Max)	Drop-out Voltage VDC(Min)	Coil Resistance (Ω) $\pm 10\%$		Max.Allowable Voltage
			1.6W	1.9W	
6	4.20	0.6	22.50	19.00	130% apply to nominal Voltage
9	6.30	0.9	51.00	42.60	
12	8.40	1.2	90.00	75.80	
18	12.60	1.8	202.50	171.00	
24	16.80	2.4	360.00	303.00	

DIMENSIONS (Unit: mm)

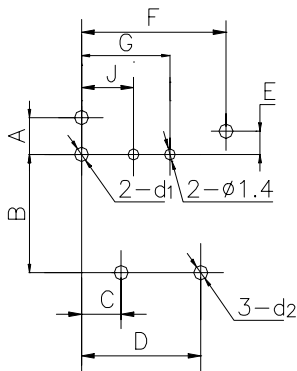
OPEN TYPE



SEALED TYPE



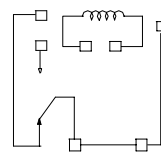
Mounting Layout(Bottom View)



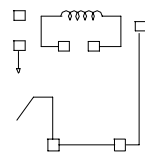
	European	U.S.A
A	3.3	3.76
B	12.1	11.89
C	2.2	4
D	13.2	12.2
E	2.2	2.28
F	15.9	14.8
G	10.1	9.09
J	5.9	5.53
d1	$\phi 2.1$	$\phi 2.5$
d2	$\phi 2$	

WIRING DIAGRAMS

1 FORM C
(SPDT)



1 FORM A
(SPST)



Industrial & Electrical Components