



Miniature Latching Relay

Part No.
NRL-08F



100a Switching capacity in a compact size
 Energy-saving, very low coil power
 Safety: No coil heating, reliable contacting
 Contacts status not change when power failure
 Varies accessories connection solution
 Suitable for KWH meters, Electricity Controller/Switch etc

CONTACT

| | |
|------------------------|--|
| Arrangement | 1A/1B |
| Contact Material | Silver Alloy |
| Contact Resistive | Max.: 2 mΩ |
| Rating | |
| Resistive load(cosφ=1) | 100A 250VAC/28VDC |
| Max. Switching Voltage | 250VAC/110VDC |
| Max. Switching Power | 25000VA/11000W |
| Expected life | Mechanical 1×10 ⁶ Electrical 1×10 ⁴ at 100A, 3×10 ⁴ at 80A |

CHARACTERISTICS

| | |
|---------------------------|-----------------------------|
| Operate Time | 20ms Max. |
| Release Time | 20ms Max. |
| Initial breakdown voltage | |
| Between Coil & Contact | 4000VAC (50/60Hz)for 1 min. |
| Between Open Contacts | 2000VAC (50/60Hz)for 1 min. |
| Insulation Resistance | Min.500MΩ (500 VDC) |
| Ambient temperature | -40 ~ +55 |
| Unit weight | 63g |
| Set Pulse Width | 50ms Min |

ORDERING INFORMATION

e.g

NRL - 08F - 12D - S - XX

Series: NCR Latching Relay

Part No. F Series

Coil Voltage: 5~48Vdc

Nil= Dual Coils; S= Single Coil

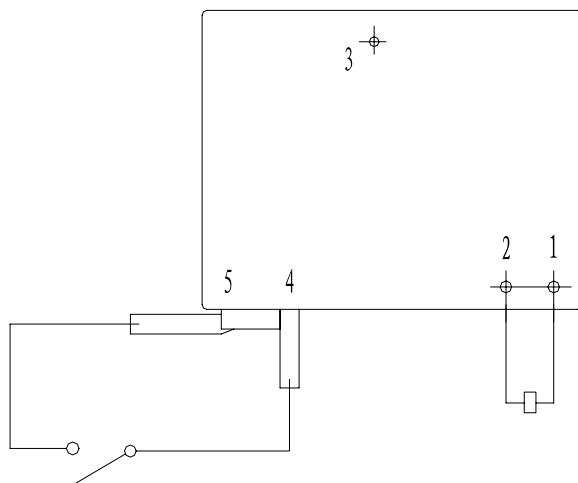
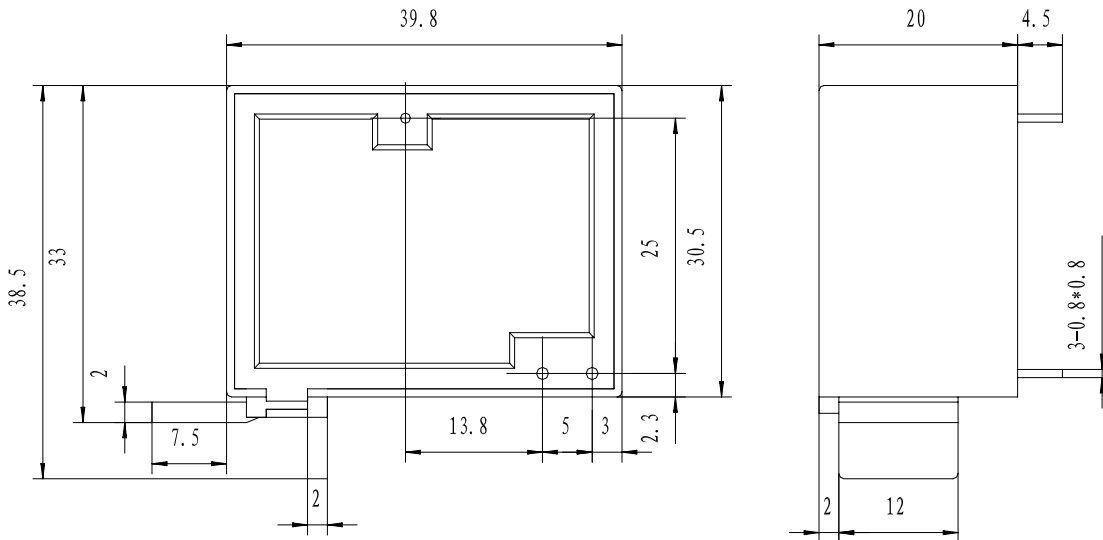
Custom design number

COIL DATA (at 20)

| Rated Voltage (Vdc) | Coil Resistance(Ω) \pm 6% | | Coil Power (W) | | Set/Reset Voltage (VDC) | Max.Allowable Voltage (VDC) |
|------------------------|--------------------------------------|-------------|----------------|-----------|----------------------------|--------------------------------|
| | Single Coil | Dual Coil | Single Coil | Dual Coil | | |
| 5 | 12.5 | 6.25 ; 6.25 | 2.0 | 4.0 | 70% | 200% of rated Voltage In Pulse |
| 6 | 18 | 9 ; 9 | | | | |
| 9 | 40.5 | 20.3 ; 20.3 | | | | |
| 12 | 72 | 36 ; 36 | | | | |
| 24 | 288 | 144 ; 144 | | | | |
| 48 | 1152 | 576 ; 576 | | | | |

DIMENSIONS

Unit: mm



1(+) 2(-) 4, 5 Contact Break
 1(-) 2(+) 4, 5 Contact Closed
 # 3 is the pin only for mounting, no electrical use.